

THE Shotgun BARDOMINIUM

FRONT ELEVATION



SQUARE FOOTAGE

AREAS

FIRST FLOOR	1,860 SQ. FT.
SECOND FLOOR	0 SQ. FT.
TOTAL LIVING	1,860 SQ. FT.
GARAGE	850 SQ. FT.
GARAGE W/LIVING	2,710 SQ. FT.
COVERED PORCH	1,360 SQ. FT.
TOTAL PORCHES	1,360 SQ. FT.
TOTAL SLAB	4,070 SQ. FT.
TOTAL UNDER ROOF	4,070 SQ. FT.

NOTE

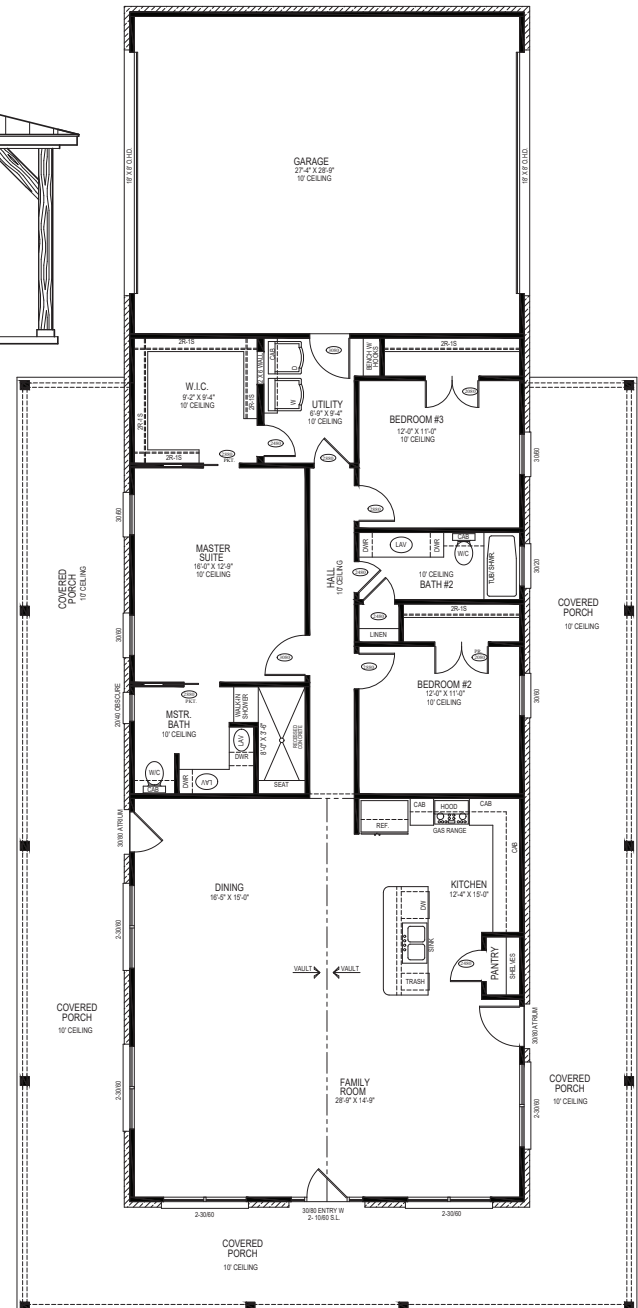
All plans are subjects to change in the field as per builders specifications. Changes must be approved by builder.

©Copyright

Not to be copied in any way without the written permission of
Design Your Dreams Custom House Plans

OPTIONAL FEATURES

- Fireplace
- Railings
- Carport
- Masonry/Stone Work
- Dormers
- Cupolas



CONCRETE & CONSTRUCTION, LLC